

784 Tudor Court

Delta BC

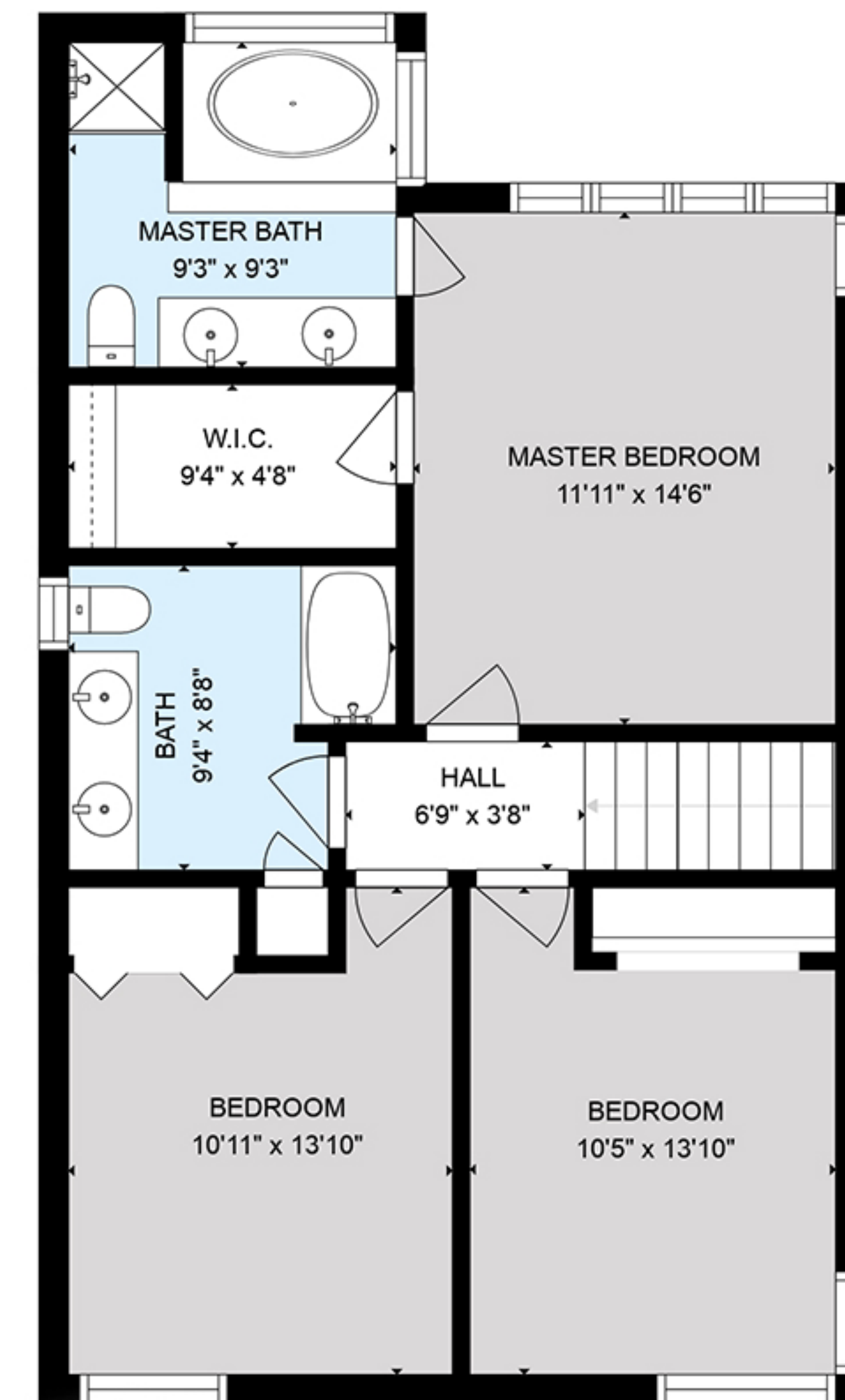


Ralph Stiebel

604 787 2500

realtor.ralph@gmail.com

FLOOR 1	1,585 SQ.FT.	PATIO	334 SQ.FT.
FLOOR 2	864 SQ.FT.	GARAGE	510 SQ.FT.
TOTAL FLOOR	2,449 SQ.FT.		



FLOOR 2
864 SQ.FT.

This floorplan is provided without warranty of any kind. The contractor disclaims any warranty including, without limitation, satisfactory quality or accuracy of dimensions. Floorplan is for visual marketing purposes and is not guaranteed.

Booked on roomvustore.com

